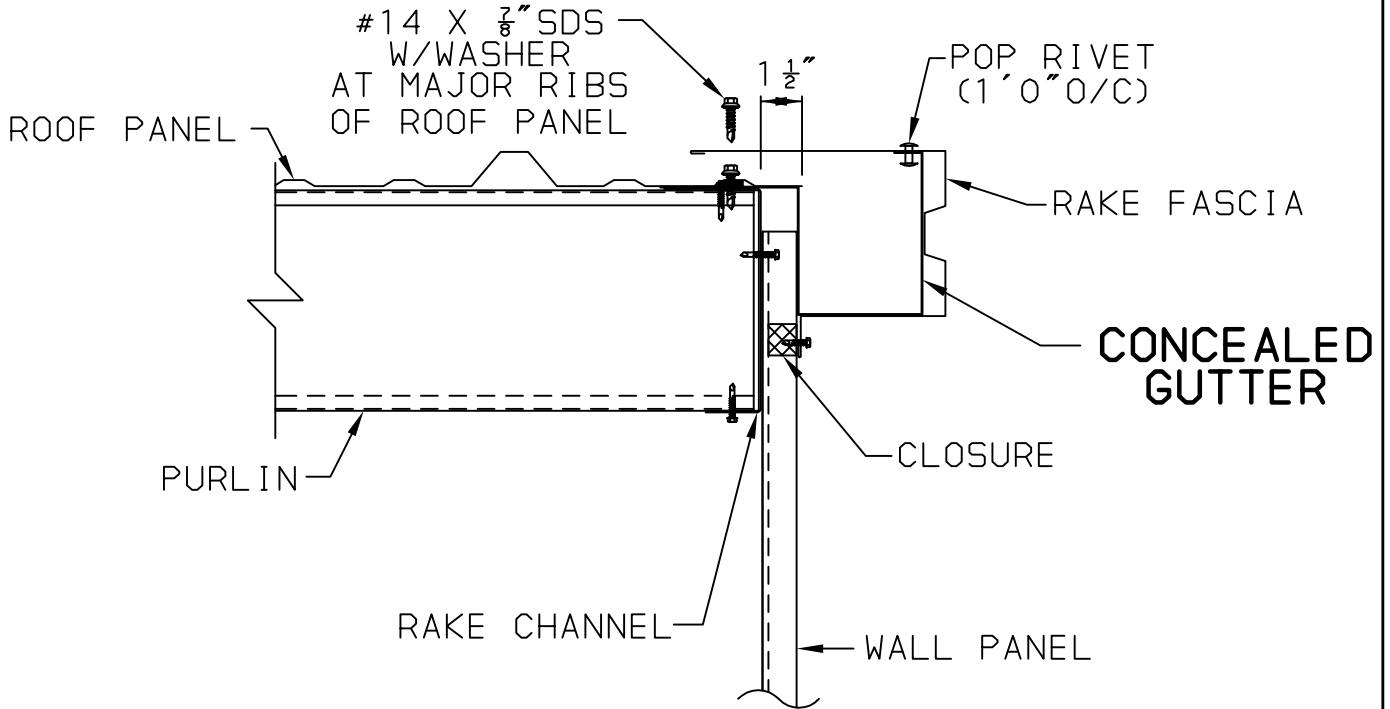


THIS DETAIL IS NOT FOR CONSTRUCTION

SECTION: **9**

NOTE: DUE TO KIRBY BUILDING SYSTEMS CONTINUING PROGRAM OF PRODUCT IMPROVEMENT, OUR CURRENT CUSTOM ERECTION DRAWINGS ARE BEING UPDATED. IF THERE IS A DISCREPANCY BETWEEN THIS DETAIL AND YOUR ERECTION DRAWINGS, THE ERECTION DRAWINGS GOVERN. ANY REFERENCES TO THIS DETAIL ARE SUBJECT TO CHANGE WITHOUT NOTICE.

* = FIELD CUT CLOSURE FOR HIGH RIBS AND USE SEALANT TAPE BETWEEN RIBS AND OVER CLOSURE



CM-SPL500

RAKE DETAIL AT SKEW W/SHEETED WALL & GUTTER

ISSUE DATE: 3-17-06

REV.:

REV.:

REV.:

REV.:

Kirby
BUILDING SYSTEMS

124 KIRBY DRIVE, PORTLAND, TN 37148
A DIVISION OF ASSOCIATED BUILDING SYSTEMS, INC.

CM-SPL500

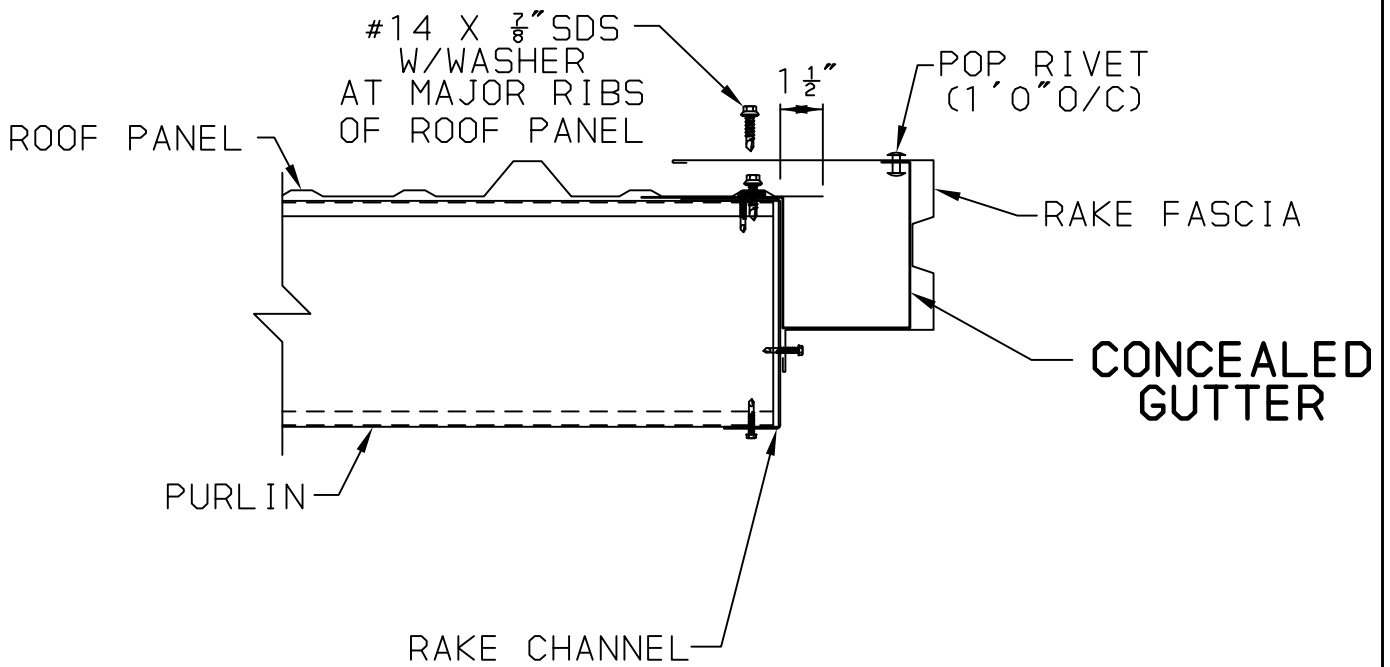
COMPUTER SERVICES NUMBER: **CED_CM-SPL500**

THIS DETAIL IS NOT FOR CONSTRUCTION

SECTION: **9**

NOTE: DUE TO KIRBY BUILDING SYSTEMS CONTINUING PROGRAM OF PRODUCT IMPROVEMENT, OUR CURRENT CUSTOM ERECTION DRAWINGS ARE BEING UPDATED. IF THERE IS A DISCREPANCY BETWEEN THIS DETAIL AND YOUR ERECTION DRAWINGS, THE ERECTION DRAWINGS GOVERN. ANY REFERENCES TO THIS DETAIL ARE SUBJECT TO CHANGE WITHOUT NOTICE.

* = FIELD CUT CLOSURE FOR HIGH RIBS AND USE SEALANT TAPE BETWEEN RIBS AND OVER CLOSURE



CM-SPL502

RAKE DETAIL AT SKEW W/OPEN WALL & GUTTER

ISSUE DATE: 3-17-06

REV.:

REV.:

REV.:

REV.:



BUILDING SYSTEMS
124 KIRBY DRIVE, PORTLAND, TN 37148
A DIVISION OF ASSOCIATED BUILDING SYSTEMS, INC.

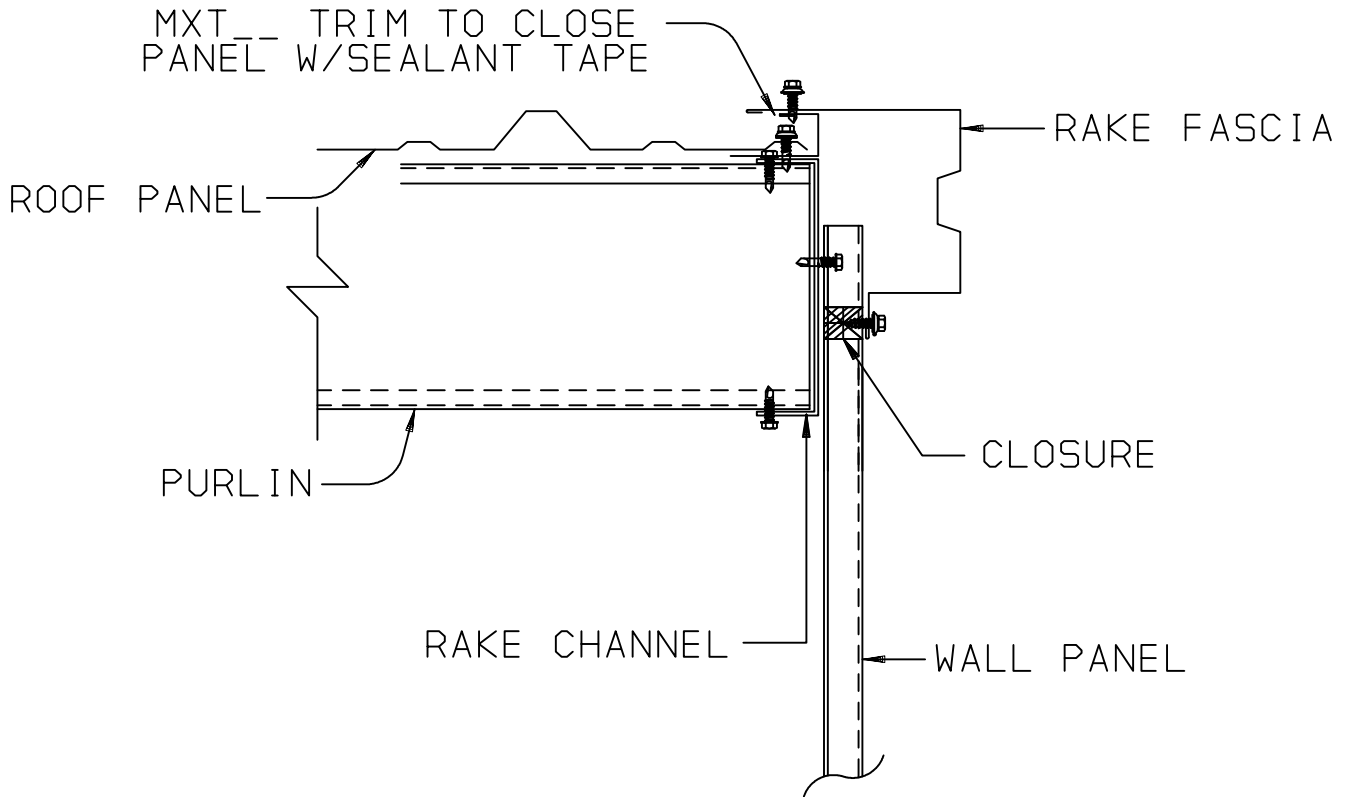
CM-SPL502

COMPUTER SERVICES NUMBER: **CED_CM-SPL502**

THIS DETAIL IS NOT FOR CONSTRUCTION

SECTION: 9

NOTE: DUE TO KIRBY BUILDING SYSTEMS CONTINUING PROGRAM OF PRODUCT IMPROVEMENT, OUR CURRENT CUSTOM ERECTION DRAWINGS ARE BEING UPDATED. IF THERE IS A DISCREPANCY BETWEEN THIS DETAIL AND YOUR ERECTION DRAWINGS, THE ERECTION DRAWINGS GOVERN. ANY REFERENCES TO THIS DETAIL ARE SUBJECT TO CHANGE WITHOUT NOTICE.



CM-SPL501

RAKE DETAIL AT SKEW W/SHEETED WALL

ISSUE DATE: 3-17-06

REV.:

REV.:

REV.:

REV.:



BUILDING SYSTEMS
124 KIRBY DRIVE, PORTLAND, TN 37148
A DIVISION OF ASSOCIATED BUILDING SYSTEMS, INC.

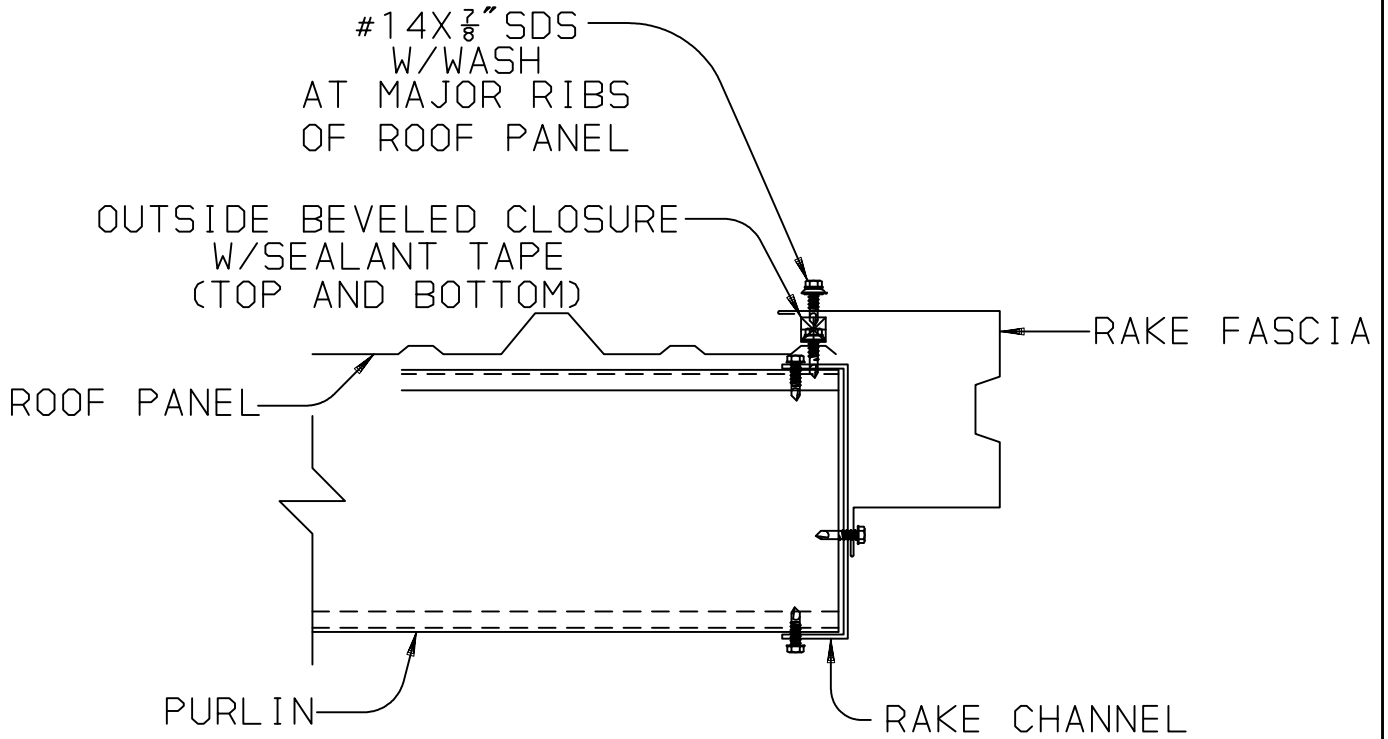
CM-SPL501

COMPUTER SERVICES NUMBER: CED_CM-SPL501

THIS DETAIL IS NOT FOR CONSTRUCTION

SECTION: 9

NOTE: DUE TO KIRBY BUILDING SYSTEMS CONTINUING PROGRAM OF PRODUCT IMPROVEMENT, OUR CURRENT CUSTOM ERECTION DRAWINGS ARE BEING UPDATED. IF THERE IS A DISCREPANCY BETWEEN THIS DETAIL AND YOUR ERECTION DRAWINGS, THE ERECTION DRAWINGS GOVERN. ANY REFERENCES TO THIS DETAIL ARE SUBJECT TO CHANGE WITHOUT NOTICE.



CM-SPL503

RAKE DETAIL AT SKEW W/OPEN WALL

ISSUE DATE: 3-17-06

REV.:

REV.:

REV.:

REV.:

Kirby
BUILDING SYSTEMS

124 KIRBY DRIVE, PORTLAND, TN 37148
A DIVISION OF ASSOCIATED BUILDING SYSTEMS, INC.

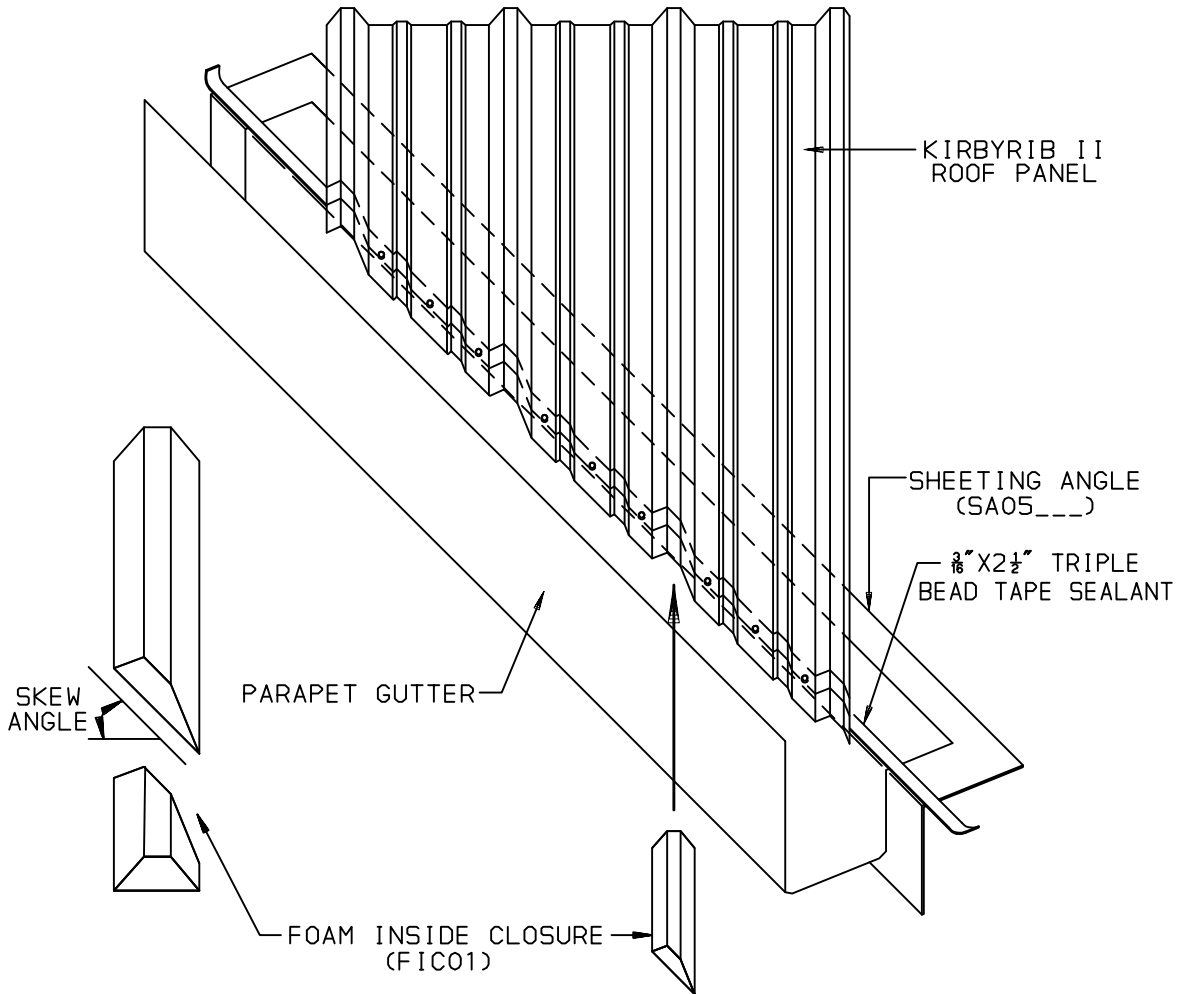
CM-SPL503

COMPUTER SERVICES NUMBER: CED_CM-SPL503

THIS DETAIL IS NOT FOR CONSTRUCTION

SECTION: **9**

NOTE: DUE TO KIRBY BUILDING SYSTEMS CONTINUING PROGRAM OF PRODUCT IMPROVEMENT, OUR CURRENT CUSTOM ERECTION DRAWINGS ARE BEING UPDATED. IF THERE IS A DISCREPANCY BETWEEN THIS DETAIL AND YOUR ERECTION DRAWINGS, THE ERECTION DRAWINGS GOVERN. ANY REFERENCES TO THIS DETAIL ARE SUBJECT TO CHANGE WITHOUT NOTICE.



1. INSTALL SHEETING ANGLE AND PARAPET GUTTER.
2. FIELD BEVEL CUT ROOF PANEL TO MATCH SKEW ANGLE.
3. APPLY $\frac{3}{8}$ " X $2\frac{1}{2}$ " TRIPLE BEAD TAPE SEALANT TO UNDER SIDE OF MAJOR PANEL RIBS.
4. FIELD BEVEL CUT FOAM INSIDE CLOSURE AND APPLY TO THE UNDERSIDE OF THE MAJOR PANEL RIBS.
5. APPLY $\frac{3}{8}$ " X $2\frac{1}{2}$ " TRIPLE BEAD TAPE SEALANT ALONG ENTIRE LENGTH OF SKEW.
6. FASTEN PANEL TO ANGE WITH #12X1 $\frac{1}{4}$ " ZAC AT 6" O/C

CM-SPL550

**KIRBYRIB II ROOF PANEL EAVE
ATTACHMENT AT SKEWED WALL**

ISSUE DATE: 3-17-06

REV.:

REV.:

REV.:

REV.:

Kirby
BUILDING SYSTEMS

124 KIRBY DRIVE, PORTLAND, TN 37148
A DIVISION OF ASSOCIATED BUILDING SYSTEMS, INC.

CM-SPL550

COMPUTER SERVICES NUMBER: **CED_CM-SPL550**